



Mouse anti SPA Monoclonal Antibody

Alternative Name(s): SPA; PSAP; PSPA; SP-A; SPA1; PSP-A; SFTP1; SP-A1; COLEC4; SFTPA1B; SP-A1 beta; SP-A1 delta; SP-A1 gamma; SP-A1 epsilon

Order Information

- **Description:** Surfactant Protein A (SP-A)
- **Catalogue:** 606-310
- **Lot:** See label
- **Size:** 100ug/200ul
- **Host:** Mouse
- **Clone:** ZY479
- **Application:** IHC(P), WB
- **Reactivity:** Hu

ANTIGEN PREPARATION

A recombinant protein SP-A

BACKGROUND

SP-A a lung surfactant protein that is a member of a subfamily of C-type lectins called collectins. Pulmonary surfactant-associated protein A1 (SP-A1, SFTPA1, PSP-A, SP-A) binds to surfactant phospholipids and contributes to lower the surface tension at the air-liquid interface in the alveoli of the mammalian lung and is essential for normal respiration. There are four main surfactant proteins, known as SP-A, B, C, and D. SP-A was the first surfactant protein to be identified, and is also the most abundant. Its molecular mass varies from 26-38 kDa. It can be found in an open or closed form depending on the other substances present in the system. Calcium ions produce the closed-bouquet form. SP-A is necessary for the production of tubular myelin, a lipid transport structure unique to the lungs. Genetic variations in SP-A are a cause of susceptibility to pulmonary fibrosis idiopathic (IPF) and respiratory distress syndrome in premature infants (RDS).

PURIFICATION

The mouse IgG is purified by Protein A-Affinity Chromatography according to Isotyping

FORMULATION

This affinity purified antibody is supplied in sterile Phosphatebuffered saline (pH7.2) containing antibody stabilizer

SPECIFICITY

This antibody recognizes human Surfactant Protein A (SP-A) protein. The other species are not tested.

STORAGE

The antibodies are stable for 24 months from date of receipt when stored at -20oC to -70oC. The antibodies can be stored at 2oC-8oC for three month without detectable loss of activity. Avoid repeated freezing-thawing cycles.

APPLICATIONS/SUGGESTED WORKING DILUTIONS*

- Western Blot: 0.1-1 µg/ml
- ELISA: 0.01-0.1 µg/ml
- Immunoprecipitation: 2-5 µg/ml
- IHC: 2-10 µg/ml
- Flow cytometry: Not tested
- Molecular Weight: 26.0
- Positive Control: Kidney Tissue
- Cellular Location: Cell Membrane

*Optimal dilutions should be determined by researchers for the specific applications.

FOR RESEARCH USE ONLY.

AbboMax, Inc 2528 Qume Drive, Suite 8, San Jose, California 95131, USA
1 408-573-1898 (Tel). 1 408-573-1858 (Fax). www.abbomax.com info@abbomax.com

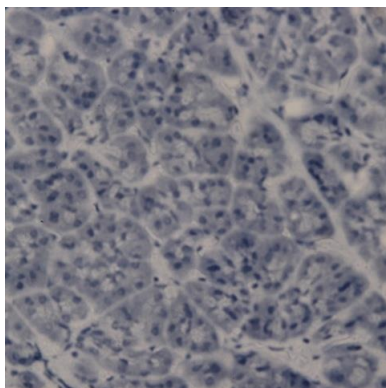


FOR RESEARCH USE ONLY.

AbboMax, Inc 2528 Qume Drive, Suite 8, San Jose, California 95131, USA
1 408-573-1898 (Tel). 1 408-573-1858 (Fax). www.abbomax.com info@abbomax.com



DATA ATTACHMENTS



Immunohistochemistry: Human breast carcinoma (FFPE) stained with Mouse anti-Surfactant Protein A (SP-A) (Clone ZY479) (Cat#) at 1:200 for 10 min @ RT. Staining of formalin-fixed tissue requires boiling tissue sections in 10 mM Citrate Buffer, pH 6.0 for 10 min followed by cooling at RT for 20 min.

REFERENCES

FOR RESEARCH USE ONLY.

AbboMax, Inc 2528 Qume Drive, Suite 8, San Jose, California 95131, USA
1 408-573-1898 (Tel). 1 408-573-1858 (Fax). www.abbomax.com info@abbomax.com